



## COMTEK NMServer for OS/400

## Data Sheet

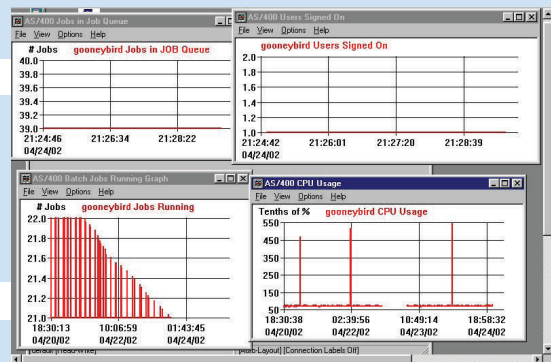
### Monitor IBM iSeries with your SNMP Manager

Your IBM AS/400 Computers are **mission critical**. Businesses depend on AS/400 Servers for everything from customer care to telephone service. COMTEK /400 allows any SNMP network manager such as Orion or SiteScope, HP OpenView and SNMPc to effectively monitor these IBM AS/400 systems. (AS/400 systems also called iSeries, and IBM i)

### New Features & Options Reduce Costs

COMTEK /400 is now offered in a NEW, low cost, easy to install, MONITOR ONLY configuration. This version allows Fault Monitoring and MIB data, but Queue filtering is not supported. Rapid deployment, and lower license prices are two of the advantages of this MONITOR ONLY capability.

New Client "Packs" allow simplified configuring, purchase and licensing of COMTEK /400 clients. Packages of five or more clients are priced to save money on license purchases and maintenance.



### Continuous Monitoring

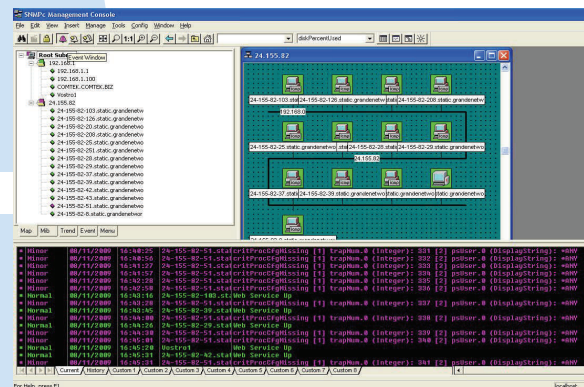
COMTEK makes important performance data such as CPU % Busy and Disk % Full available to the SNMP manager at **all** times. The information provided (called the MIB) is extensive, current, and accurate. This information allows proactive action to be taken **before** users are impacted.

#### COMTEK /400 Monitors

- ◆ Jobs in System
- ◆ Active Jobs
- ◆ Number of Pools
- ◆ Disk Capacities
- ◆ Disk Space Used
- ◆ Disk Read/Write
- ◆ Users Signed On/Off
- ◆ Batch Jobs Running

#### MIB Items

- ◆ Processes Data
- ◆ Critical Processes
- ◆ Jobs in Queue
- ◆ QSYSOPR Messages
- ◆ SNMP Parameters
- ◆ Communications Lines
- ◆ Communications Cntrls
- ◆ Many More....



## COMTEK/400 Installation Package

You install COMTEK /400 by restoring a library, configuring a few parameters, and loading the MIB into the SNMP Network Manager. COMTEK /400 includes the Agent, MIB, Install Guides, and Sample Applications.

Installing COMTEK /400 is easy and safe. An ADMIN application is provided to assist. After a few installation steps the complete MIB will be available to the Manager, and alerts will be sent for disk and cpu problems. Standard IBM TCP and SNMP are used for communications. OS/400 version V3R1M0 through V6.x are supported

```
ADM0003          Edit Configuration Files          5/29/09
COMTEK

Key X to Select  Config File
-
|                CRIT_PROCS  CRITICAL PROCESS Monitoring
-                DUMPTRAP    DISPLAY Recent Messages
-                INIT_CFG    INITIAL DISK, CPU, Other Threshold
-                Q_MON_CFG   MONITOR Generic Queues
-                SKIP_HSGID  MONITOR QSYSOPR
-                SKIP_PGM    GENERIC Queue Filter

Enter X to Select and press return.

Bottom
```

## Monitor QSYSOPR

QSYSOPR messages can be filtered and critical messages sent to the SNMP Manager instantly so corrective action can be taken.

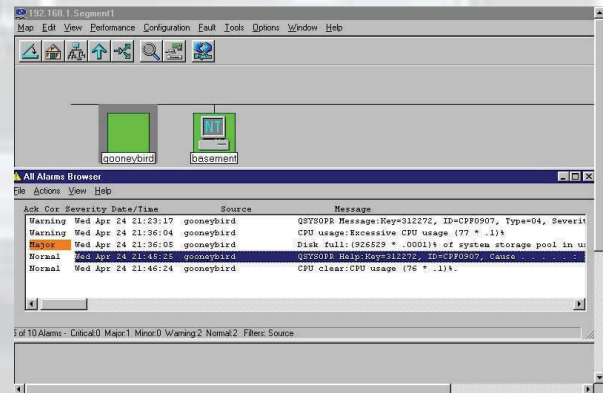
Message filtering can be by Severity Code, Message ID, and Message Content. Other user queues can be monitored in the same manner.

### COMTEK /400 Alerts (TRAPS)

- ◆ Cold Start
- ◆ QSYSOPR Message
- ◆ Disk Nearly Full
- ◆ CPU Excessive
- ◆ Critical Process Missing
- ◆ QUEUE Message
- ◆ User Trap
- ◆ Disk Clear
- ◆ QSYSOPR Help
- ◆ CPU Clear

## Immediate Problem Alerts

In addition, COMTEK /400 alerts the SNMP Manager problems *immediately* of critical problems such as Disk Nearly Full, Critical Process Stopped, or important QSYSOPR message. These alerts (called TRAPS) include Hardware issues, Software problems, and **User Defined Alerts**. You can define traps specific to your company.



© Copyright 2009 COMTEK Services, LLC. The information contained herein is subject to change without notice. Nothing herein should be construed as constituting an additional warranty. COMTEK shall not be liable for technical or editorial errors or omissions.

COMTEK has been providing SNMP products to the Telecom, Banking, Stock Exchange, Investment, Finance, Food and Pharmaceutical industries since 1998. COMTEK products are monitoring thousands of computers in Africa, Asia, Australia, Europe, and the Americas. COMTEK facilities are located in Texas, New Hampshire, North Carolina, and Virginia. Support is provided worldwide. NMServer, COMTEK, and COMTEK /400 are trademarks of COMTEK Services, LLC. IBM, HP, Mercury, Tivoli, SiteScope, AS/400, Compuware, OpenView, Vantage, IBM, OS/400, Orion, and iSeries may be trademarks of their respective companies.



COMTEK Services, LLC • Phone: (603) 881-9556  
Nashua New Hampshire • Fax: (603) 881-5504  
<http://www.COMTEKSERVICES.com>