

### Your Network Manager can Monitor OpenVMS Servers

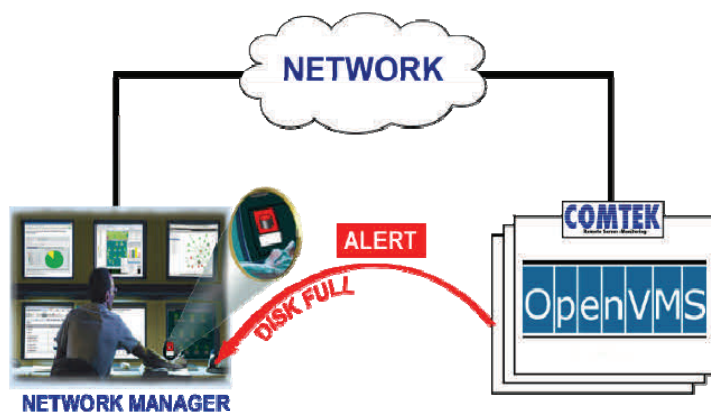
Many OpenVMS Servers run Mission Critical Applications. A slow or failing system can have a severe impact on your customers and revenue stream.

With COMTEK, your existing Network Manager can monitor those very important OpenVMS systems.

Tivoli, SiteScope, LabTech, Solarwinds and other Network Managers are successfully monitoring OpenVMS Servers. COMTEK /VMS can be used with *any* standard Network Manager.

COMTEK monitors Applications, Hardware, and the Operating System. COMTEK can be used on Alpha, VAX, and Itanium systems - from Blades to Large Scale machines.

COMTEK will alert you immediately to problems on your OpenVMS Servers.

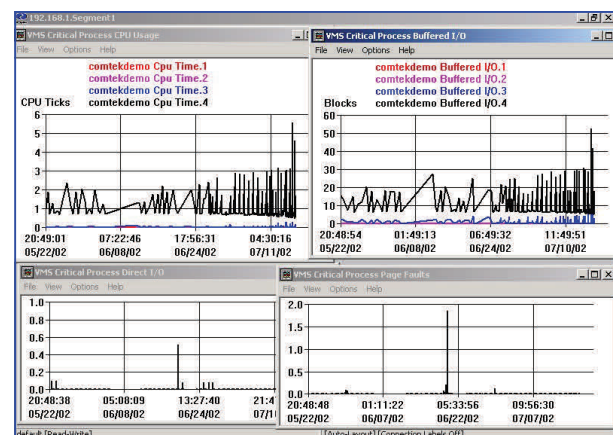


### Monitor Resources and Performance

- System Utilization. COMTEK /VMS monitors page file, swap file and physical memory utilization and sends Alerts when usage exceeds user defined thresholds.
- CPU. COMTEK /VMS maintains statistics on CPU util. in each processor mode in 1, 5 & 15 min. increments. And sends Alerts when total CPU usage exceeds the defined threshold
- Disks. COMTEK /VMS collects statistics on disks and monitors disk utilization levels. Disk thresholds are set system wide with the option of specifying additional thresholds for specific critical logical disks.
- Queues. COMTEK /VMS watches user specified queues and their entries, sending Alerts to indicate problems with queues or queue entries.

### Monitor System Health

- System Errors. COMTEK /VMS reports system errors that are detected on disks, tapes, buses, NICs, CPU and memory as Alerts.
- Opcom Messages and Replies. COMTEK /VMS converts system Opcom messages into ALERTS (traps). The user may specify message filters to eliminate redundant or unimportant data.
- Application Logs. COMTEK /VMS can monitor and filter user data. This feature can be particularly useful for processing of application log files. COMTEK can filter these logs and send important messages to the Network Manager as Alerts. COMTEK /VMS v4.2 now has the ability to filter for Class 32 error codes.



## Monitor Processes

- Active Processes. COMTEK /VMS gathers statistics on current processes and analyzes them to determine if the system is compute bound or if processes are in resource wait (MWAIT) state.
- Mission Critical Processes. COMTEK /VMS sends an Alert if a user specified mission critical process has failed.

### OpenVMS Agent Trap Summary

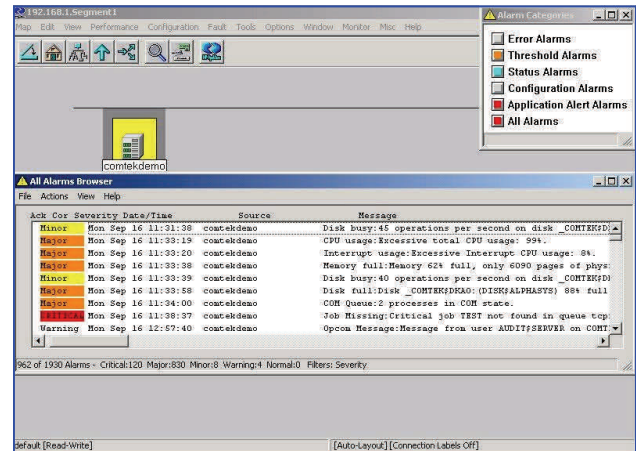
Mission Critical Process Missing • User Trap • Page File Full • Swap File Full • Memory Full • Excessive CPU Utilization • Excessive Interrupts • Disk Full • Excessive Disk I/O • Disk Status Change • Disk I/O Queue Length • Shadow Set Failure • Shadow Set Copy • Shadow Set Merge • Queue Status Change • Queue Entry Status Change • Critical Job Missing • Excessive COM Processes • Excessive COMO • Process in MWAIT State • Excessive MWAIT Processes • Opcom Message • Hardware Error • Cold Start • Warm Start • Process Termination

### OpenVMS Agent MIB Overview

**System Information:** Node Name • Hardware Name • System Boot Time • Operating System Version • Available/Active CPU Counts • Page Size • Physical Memory • Page File • Swap File

**Resource Information:** CPU • Disk • Shadow Set • Queues and Queue Entries • Active Processes • Mission Critical Processes

**Status Information:** Hardware Errors • Opcom Messages • Agent Configuration • Configuration Information • User Specified Trap Thresholds • User Specified Time Intervals For Statistics Gathering



## COMTEK /VMS Package

COMTEK /VMS includes the agent, sample configuration files, user guide, installation aids, and sample programs. COMTEK /VMS is compatible with HP TCP/IP Services, MultiNet and TCPware.

### PREREQUISITES

OpenVMS version 5.5-2 or later; TCP connectivity to the Network Manager.

### LICENSING AND WARRANTY

COMTEK products are licensed on a per node basis and carry a money back guarantee. Quantity and corporate discounts are available.

### MAINTENANCE

Maintenance is provided via FTP, e-mail, phone and fax on a 24x7 basis.

### ABOUT US

COMTEK has been providing Network Monitoring products to the Telecom, Banking, Stock Exchange, Food, Investment, Finance and Pharmaceutical industries since 1998. Support is provided worldwide.

Other COMTEK products are available for IBM iSeries (AS/400, OS/400), and Stratus VOS.

**COMTEK Services, LLC**  
**Nashua New Hampshire**



**Phone: (603) 881-9556**  
**Fax: (603) 881-5504**

<http://www.COMTEKSERVICES.com>

© 2013 COMTEK Services, LLC.

The information contained herein is subject to change without notice. Nothing herein should be construed as constituting an additional warranty. COMTEK shall not be liable for technical or editorial errors or omissions.

NMServer, COMTEK, and COMTEK /VMS are trademarks of COMTEK Services, LLC. VMS, OpenVMS, Itanium, Alpha, HP, Mercury, Tivoli, SNMPc, SiteScope, Compuware, OpenView and Vantage may be trademarks of their respective companies.