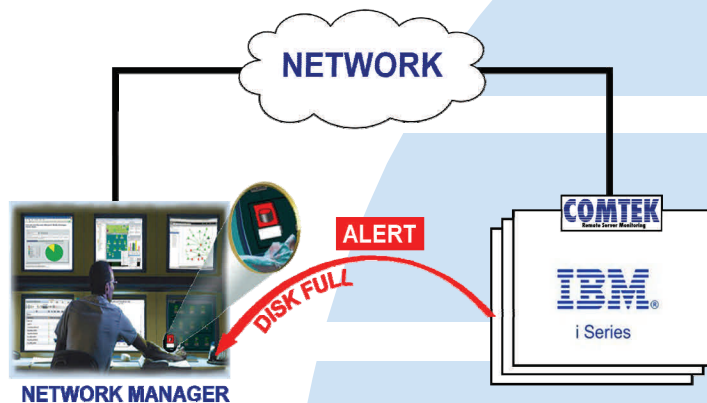


Monitor IBMi servers with your Network Manager

Your IBMi servers are *mission critical*. Businesses depend on IBMi servers for everything from customer care, patient records, financial transactions, telephone service and more. COMTEK /400 remote monitoring software allows any standard network manager to effectively monitor IBMi servers. OS/400 versions v6.1-v8.x are supported in the current version.



QUICK installer software

The QUICK Installer software for Windows makes installing COMTEK /400 quick and easy.

The QUICK Installer software allows rapid deployment to any number of target servers a reality.

The User Guide contains step by step instructions for installing COMTEK on your IBM iSeries servers using the QUICK Install or legacy install method.

For your convenience, there is a quick start guide available that will have you up and running in minutes.

Active Server Monitoring

COMTEK /400 actively monitors your IBMi server for:

- ◆ CPU % ASP and DISK capacity statistics at user configurable thresholds.
- ◆ Critical Processes and/or Job Status for mission critical processes.
- ◆ QSYSOPR and Generic MSG QUEUE monitoring and filtering by MSG ID, MSG Severity, and/or MSG content.
- ◆ JobQ Threshold Alerts notify you when a JobQ exceeds the user specified Job threshold.

This information is available to the network manager at **all** times. COMTEK will send ALERTS immediately to the network manager. Active Monitoring allows corrective action to be taken **before** users are impacted.

The screenshot shows the 'COMTEK /400 Installer' window. It contains the following fields and buttons:

- IP Address of AS/400: [Text Input Field]
- AS/400 Username: [Text Input Field]
- AS/400 Password: [Text Input Field]
- COMTEK /400 Product: [Text Input Field] with a 'Choose File...' button next to it.
- Buttons: 'Install COMTEK' and 'Cancel'.

The COMTEK /400 Download

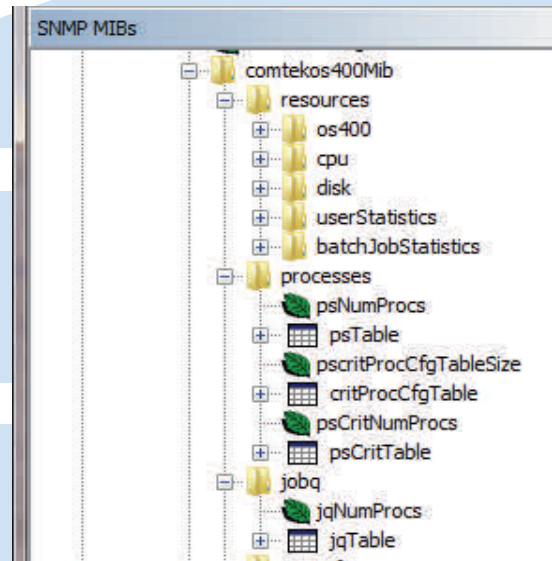
COMTEK /400 includes the Agent, .mib file, Product Documentation, user customizable configuration files and the COMTEK ADMIN application.

Comprehensive COMTEK MIB

COMTEK /400 comes with a comprehensive .mib that allows the user to poll:

- ◆ %CPU ASP
- ◆ Disk Capacities
- ◆ Disk Space Used
- ◆ Job Status
- ◆ Batch Jobs Running
- ◆ Processes Data
- ◆ Jobs in Queue
- ◆ Users Signed On/Off
- ◆ Communications Lines
- ◆ Jobs in System
- ◆ Many More....

The COMTEK /400 .mib also allows the user to make many configuration changes from the Network Manager without the need to re-start COMTEK.



Monitor QSYSOPR

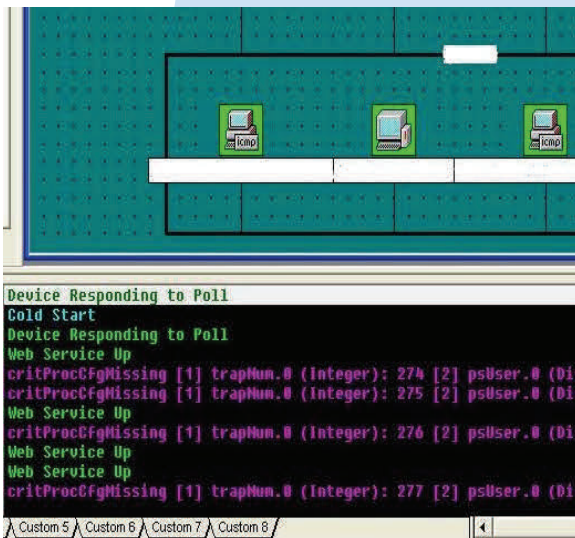
QSYSOPR messages can be filtered and critical messages sent to the SNMP Manager instantly so corrective action can be taken.

Message filtering can be by Severity Code, Message ID, and Message Content. Other message queues can be monitored in the same manner.

Critical Process Monitoring

The Critical Process missing trap informs you immediately when your mission critical processes have stopped running.

Critical processes are specified by USERNAME, JOBNAME, number of instances and SUBSYSTEM. The special token *ANY can be used with the username and subsystem name fields.



© Copyright 2016 COMTEK Services, LLC. The information contained herein is subject to change without notice. Nothing herein should be construed as constituting an additional warranty. COMTEK shall not be liable for technical or editorial errors or omissions.

COMTEK has been providing Network Management products to the Telecom, Banking, Stock Exchange, Investment, Finance, Food and Pharmaceutical industries since 1998. **COMTEK** products are monitoring thousands of computers in Africa, Asia, Australia, Europe, and the Americas. **COMTEK** facilities are located in Texas, New Hampshire, North Carolina, and Virginia. Support is provided worldwide. NMServer, COMTEK, and COMTEK /400 are trademarks of COMTEK Services, LLC. IBM, HP, What's up Gold, Tivoli, SiteScope, AS/400, Compuware, OpenView, Vantage, IBM, OS/400, Orion, and iSeries may be trademarks of their respective companies.



COMTEK Services, LLC • Phone: (603) 881-9556
Nashua New Hampshire • Fax: (603) 881-5504
<http://www.COMTEKSERVICES.com>