

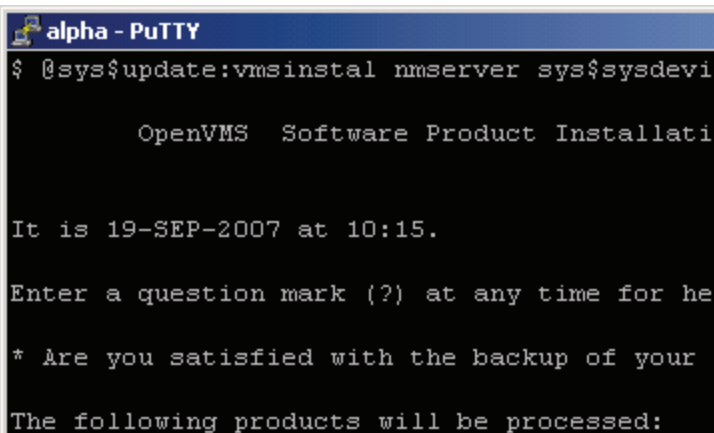
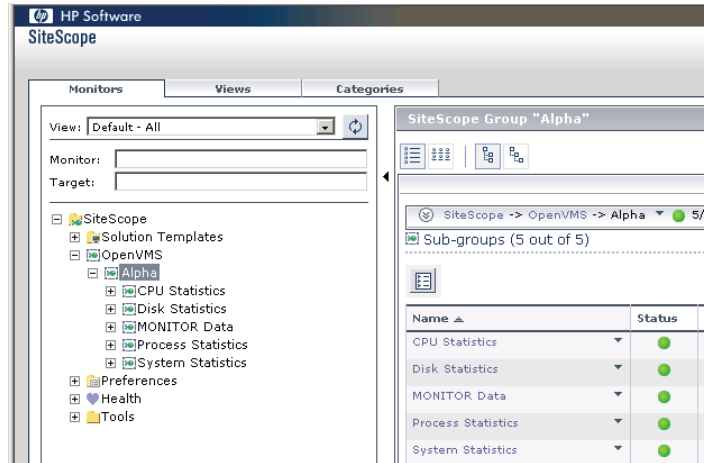
COMTEK / OpenVMS — SiteScope Integration Data Sheet

Monitor HP OpenVMS with SiteScope

Your Network and Computers are Mission Critical. Your business depends on its Networks and Servers. Not only are IP networks carrying core business transactions, they are increasingly being used to monitor the performance of remote servers. Without properly functioning servers, you may not be able to conduct business at all. Comtek / OpenVMS allows your SiteScope installation to monitor your HP OpenVMS Alpha, Itanium, and VAX computers anywhere in the world!

HP SiteScope Monitors Networks and Servers

HP SiteScope is unmatched in monitoring the performance of critical Network and Server Infrastructure. SiteScope provides the information necessary to effectively manage your systems to avoid problems whenever possible. SiteScope reduces cost of ownership by consolidating maintenance and presenting all performance data at a central location.



Monitor HP OpenVMS with SiteScope

Now you can use SiteScope to Monitor your HP OpenVMS systems. COMTEK NMServer for OpenVMS provides all of the information necessary to understand how your OpenVMS systems are performing. Data such as Disk% full, CPU load, and Memory Usage are available to SiteScope in real time. OpenVMS performance data provides the missing link in many SiteScope installations.

COMTEK / OpenVMS Includes OpenVMS Systems in SiteScope

COMTEK / OpenVMS is an application that resides on OpenVMS machines. COMTEK /OpenVMS monitors important factors about the machine and OpenVMS, and makes this information available when polled by SiteScope. In addition, COMTEK /OpenVMS sends alerts (called traps) when critical thresholds such as disk nearly full are exceeded.



COMTEK NMServer/OpenVMS Features

COMTEK /OpenVMS Monitors:

- Disks, CPU, Interrupts, Processes, Shadow Sets, Excessive COMO, Processes in MWAIT, OpCom

OpCom and other Queues:

- COMTEK /OpenVMS can Filter and Selectively Forward Opcom messages. The user may specify message filters to eliminate redundant or unimportant Opcom messages.

Mission Critical Processes:

- COMTEK /OpenVMS sends alerts immediately if a Critical Process is missing or has failed.
- COMTEK /OpenVMS sends Alerts for: Critical Process Missing, CPU Overload, Disk Nearly Full, User Defined Alerts.

```
alpha - PuTTY
# This file contains configuration parameters
# Lines which begin with a pound sign (#) are
# The valid keywords and their default values
#
# AllPpData=no
# Community=public
# ComQueue=5
# ComoQueue=1
# ControlTermProc=disabled
# CpuPersist=1
# CpuUtil=90
# CritDisksOnly=false
```

Complete Package

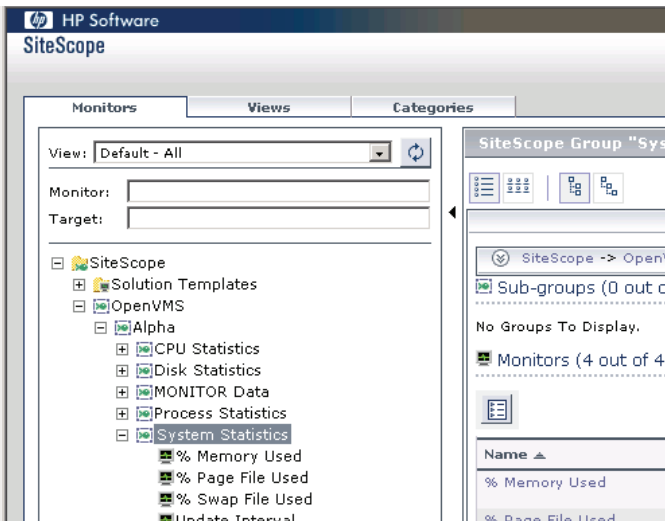
The COMTEK /OpenVMS package includes everything necessary to install and configure COMTEK /OpenVMS including the Installation Guide and MIB, User Guide, Sample Configuration Files, and Readme First document.

COMTEK /OpenVMS Easy to Install on OpenVMSs

COMTEK /OpenVMS is installed by loading the product and configuring a few parameters such as which features and processes to monitor, and thresholds such as at what percentage disk capacity an alert will be sent.

SiteScope Easy to Configure to monitor OpenVMS

A complete Installation Guide for installing the COMTEK /OpenVMS MIB in SiteScope is included. This Guide includes step-by-step instructions on how to include the necessary information in SiteScope to allow it to monitor your OpenVMS systems.



COMTEK /OpenVMS Developed in 1995

COMTEK NMServer /OpenVMS was designed to serve the needs of OpenVMS users such as Governments, Banks, Investment Firms, Utilities, Stock Exchanges, Manufacturers, and other critical industries. COMTEK /OpenVMS has been installed in North and South America, Europe, Asia, Africa, and Australia. COMTEK /OpenVMS has proven to be a trouble-free, easy to use, and has almost no impact on performance. Support is available worldwide.

© Copyright 2008 COMTEK Services, LLC. The information contained herein is subject to change without notice. Nothing herein should be construed as constituting an additional warranty. COMTEK shall not be liable for technical or editorial errors or omissions.



COMTEK

Tel: (603) 881-9556 Fax: (603) 881-5504
<http://www.COMTEKSERVICES.com>

COMTEK Services LLC is a computer software and consulting company in the business of providing network solutions and is recognized for providing reliable, robust application code. Founded in 1988, COMTEK has been in continuous operation supporting clients from its New Hampshire, North Carolina, Texas, and Virginia offices.

NMServer, COMTEK Services and COMTEK /OpenVMS are trademarks of COMTEK Services, LLC.
HP, SiteScope, IBM, OpenVMS, Alpha, Itanium, VAX, , Microsoft, Windows, and Java are trademarks of their respective companies.